

TOM SAWYER

3rd and 4th of Primary

Teacher's Guide





BEFORE GOING TO THE THEATRE

1. THE STORY

Tom Sawyer is a kid who doesn't like school and who prefers to enjoy playing on the banks of the river. His aunt Polly is very worried because he always gets in trouble. But Tom is a rebellious and adventurous child with a big heart.

He spends his days with his best friend, Huckleberry Finn. The two friends like to fish, sleep, eat and play at being pirates.

One day, they find a mysterious treasure in a cemetery. They decide to hide it in a cave, but a very dangerous murderer will follow them.

Discuss the following questions with the whole class:

Do you know who Tom Sawyer is? Have you ever seen a film or read a book about him?



Is he naughty or is he responsible?



Do you think he has any friends? What are they like?



Do you think Tom listens to his Aunt Polly or prefers going on adventures?



Have you ever disobeyed your parents or grandparents to do something wrong? How did it end?





2. ADVENTURES AND FRIENDSHIP

Huckleberry Finn and Tom Sawyer are best friends. They play after school and go on adventures together.

Who are your best friends?

.....

.....

Draw and describe them using adjectives (funny, big, lazy, clever, etc.).

Do you like adventures? Explain your last adventure with a friend.

.....

.....

.....

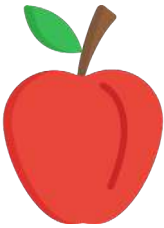




3. VOCABULARY

a) What fruit or vegetable is it?

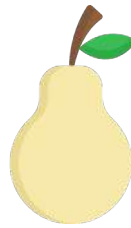
Tom Sawyer likes to eat apples. Look at the pictures and write down the name of each fruit or vegetable.



Apple



Orange



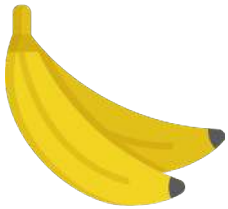
Pear



Strawberry



Grapes



Banana



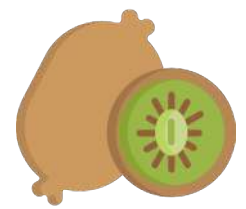
Lemon



Pineapple



Coconut



Kiwi



Melon



Cucumber



Tomato



Pumpkin



Carrot



Corn



Onion



Mushroom



Potato



Eggplant



b) Adventures crossword

Find the hidden adventure vocabulary in the crossword.

Island Pirate Treasure Map Backpack Gold Ship Compass

F	I	L	P	X	R	T	G	B	G
J	G	O	L	D	M	C	P	A	U
I	O	P	L	F	T	W	R	C	Y
S	T	B	I	Z	R	U	S	K	D
L	M	A	E	R	E	S	Y	P	W
A	L	E	N	F	A	E	M	A	M
N	R	O	I	P	S	T	Y	C	A
D	T	O	M	L	U	H	E	K	R
F	R	O	Z	E	R	W	I	C	C
N	C	H	I	L	E	M	A	P	T

c) Choose three objects you would take to a desert island and explain why.

.....

.....

.....

.....



d) Read and practice this vocabulary from the play.

Let your students work with their dictionaries to look up the meaning of the words they don't understand. You can try to make sentences with every word from the list.

Brush	Spider	Punishment	Moustache	Pimple	Anchor	Graveyard
Corpse	River	Funeral	Casket	Skull	Boat	Paddle
To steal	To panic	Fault	Portrait	To snore	Fence	Candle

4. DRAW A PORTRAIT

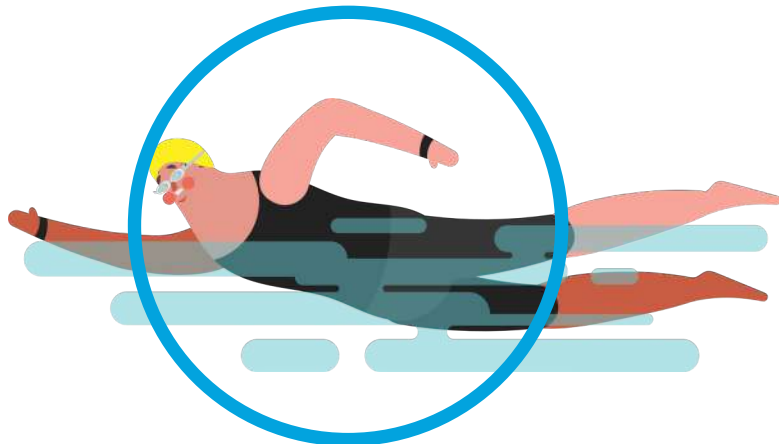
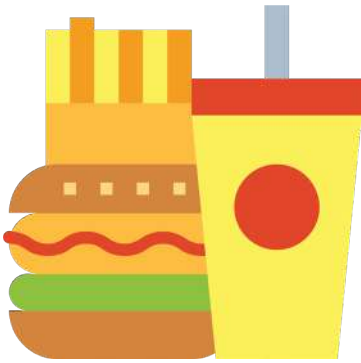
Tom and Huck are looking for treasure and they see a very dangerous man. He has a scar on his cheek, a long beard, black teeth, a big hat and red eyes. Imagine this man and draw him:





5. GOOD OR BAD?

Circle the good habits and explain why the others are bad:





6. LISTENING

Listen to track 1 and answer the following questions:

- Why is Tom Sawyer punished?

Because he didn't go to school. He missed his classes yesterday.

- What animal did he throw at his teacher?

He threw a spider at her.

- Aunt Polly says she doesn't want Tom to be out at night. Why?

Because two bad (and dangerous) men robbed a bank and they are free.

- What does Tom Sawyer do to improve the portrait of Aunt Polly?

He draws horns on it (because she is a demon), bigger teeth (because she looks like an animal) and a moustache (so she can look prettier)

- What does Tom promise to give Huck in exchange for painting the fence?

Half of his treasure (half of the gold he says he has found)

- Why does Huck want to be rich?

Because if he were rich no one would care about the giant pimple on his face.



7. SPEAKING: Guess the word

Work in pairs: explain the words below and let your classmate guess what you are describing.

Pirate

River

Summer

Danger

Killer

Corpse

Ship

Cave

Aunt

Friend

Island

Thief

Horizon





AFTER GOING TO THE THEATRE

Hello again! Did you enjoy the show? Let's see if you remember the plot:

a) How many characters appear in the play? How many actors play them?

Four characters: Tom, Huck, Aunt Polly and Joe. They are played by two British actors.

b) Who do you think was the funniest character and why?

.....
.....

c) How are they dressed?

.....
.....
.....

d) What is your favourite scene? Why?

.....
.....
.....
.....
.....



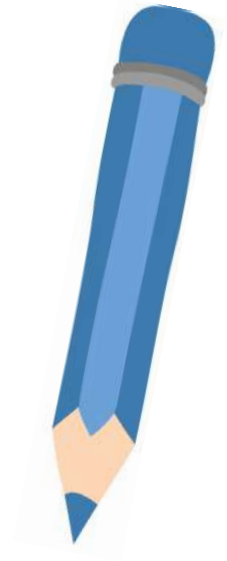


Order the scenes from 1 to 10 and share your answer with your classmates.

- 7 The town thinks Tom and Huck are dead.
- 2 Tom convinces Huck to go to the cemetery.
- 4 Both friends escape to the river.
- 9 Tom goes back to the cave but the gold is gone.
- 5 They row for hours and find a cave.
- 8 Tom tries to report the crime but Aunt Polly doesn't believe him.
- 6 Huck and Tom hide the treasure and go to the village.
- 1 Tom is painting a white fence.
- 10 Tom and Huck escape from the cave but they sacrifice the treasure. Friendship is more important than gold.
- 3 Tom and Huck find a corpse.



Now draw your favourite scene from the last exercise:





transeduca

www.transeduca.com

info@transeduca.com

911 138 140 / 934 740 002