

SHERLOCK HOLMES

3rd and 4th of Primary





BEFORE GOING TO THE THEATRE

THE STORY

Based on the detective novel by Sir Arthur Conan Doyle, *A Study in Scarlet* tells the story of the detective Sherlock Holmes and his assistant John Watson as they begin one of many murder mysteries in London.

In this story they find a ring and the word "rache" (German for revenge) written in blood on the wall at the murder scene. Will these clues help them resolve this double murder?

1. Discuss the following questions together in class:

- a) Do you know who Sherlock Holmes is?
- b) What qualities make Sherlock Holmes a good detective?
- c) Do you think Sherlock Holmes would be successful as a detective in the present day?
- d) Who is Enola Holmes?

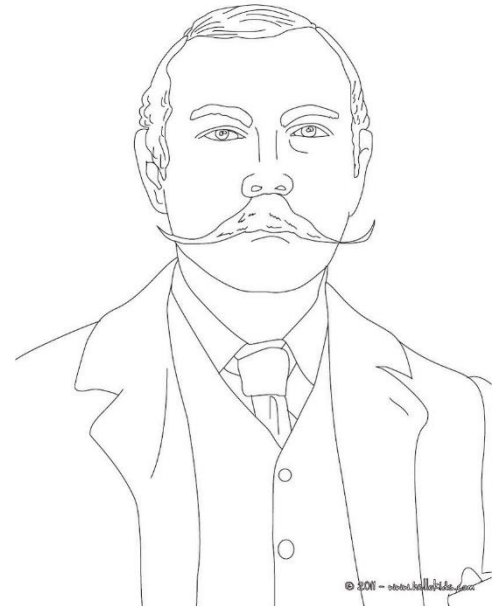
THE AUTHOR

2. Read the information about the author of *A Study in Scarlet* and complete the fact file below.

Sir Arthur Conan Doyle was born in Edinburgh, Scotland, in 1859. He is best known for being the creator of the detective, Sherlock Holmes and his assistant Dr Watson.

He enjoyed storytelling and hoped to be a writer one day however, when he left school he became a doctor.

Due to his father's early death, he was left to support his family and started writing to make extra money. His stories about Sherlock Holmes became very popular, and the detective has remained one of the world's best loved literary characters.



- a) **Date and place of birth:**
- b) **Famous for:**
- c) **First career:**
- d) **Writing career:**

THE CHARACTERS

3. Read the character descriptions.

Sherlock Holmes

Holmes is a detective who likes to learn about new things and uses science to resolve criminal cases.

John Watson

Watson is a military doctor who on his return to London becomes Holmes' roommate and companion.

Mrs Hudson

Mrs Hudson rents her house on Baker Street to Holmes and Watson. She is one of the few women that Sherlock Holmes trusts.

a) Now use the words to match the names with the relationship to Holmes.

Dr. Watson

Housekeeper

Sherlock Holmes

Best friend & housemate

Mrs Hudson

Detective

VOCABULARY

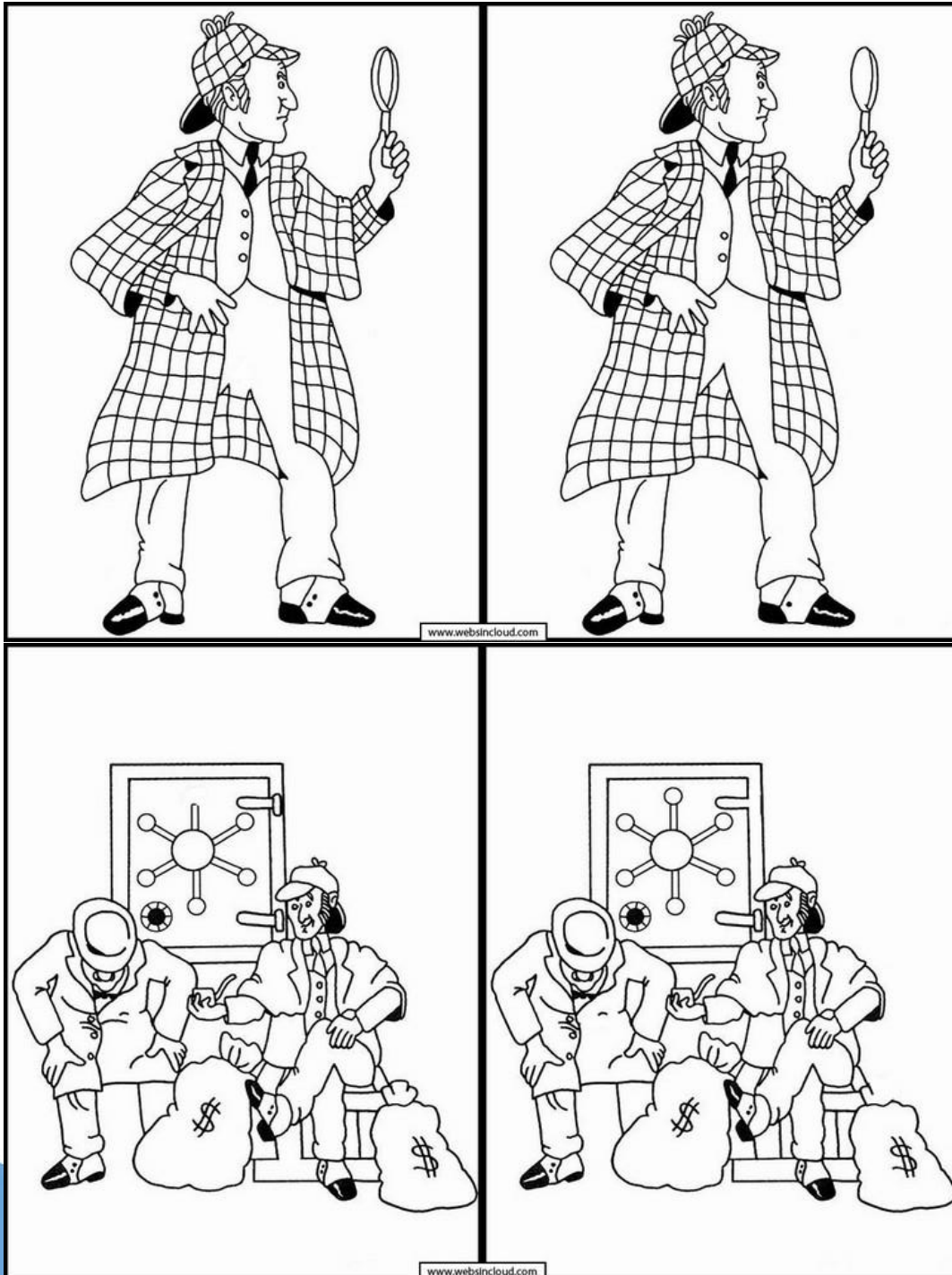
4. Label the detective below with the correct words:

cape **magnifying glass** **cap** **pipe** **clues** **notes**





5. Spot the differences.
Can you spot the 5 differences in these pictures?





6. Solve the clues

Play detective and use the key below to solve the words below:

Example - 17-11-22 **CAT**

a	b	c	d	e	f	g	h	i	j	k	l	m	n	o	p	q	r	s	t	u	v	w	x	y	z
11	5	17	24	19	16	8	26	25	12	1	3	2	23	21	7	10	14	4	22	6	15	18	13	9	20

- a) 11-14-22-26-6-14-17-21-23-11-23-24-21-9-3-19
- b) 7-14-25-15-11-22-19-24-19-22-19-17-22-25-15-19
- c) 24-21-17-22-21-14-18-11-22-4-21-23
- d) 4-17-21-22-3-11-23-24-9-11-14-24
- e) 3-21-23-24-21-23
- f) 24-19-24-6-17-22-25-21-23
- g) 5-11-1-19-14-4-22-14-19-19-22
- h) 19-15-25-24-19-23-17-19
- i) 4-26-19-14-3-21-17-1-26-21-3-2-19-4
- j) 3-21-8-25-17

7. Anagrams - Unscramble the letters to make words related to the play.

Example: **PAC** Cap

- a) IPPE
- b) DOOBL
- c) ECUL
- d) TVEEETICD
- e) RCALSET
- f) PCEA
- g) RMERUD
- h) ICELOP





AFTER GOING TO THE THEATRE

8. **Hello again! Did you enjoy the show?** Let's see if you remember the story:

a) How many characters appear in the play? How many actors play them?

.....
.....

b) How are they dressed?

.....
.....
.....
.....

c) What do you think is the funniest scene?

.....
.....
.....
.....
.....
.....



9. **True or false.** Look at the sentences below and say if they are true or false.

The story takes place in London.

Mrs Hudson is Sherlock Holmes' wife.

At the scene of the murder a necklace is found.

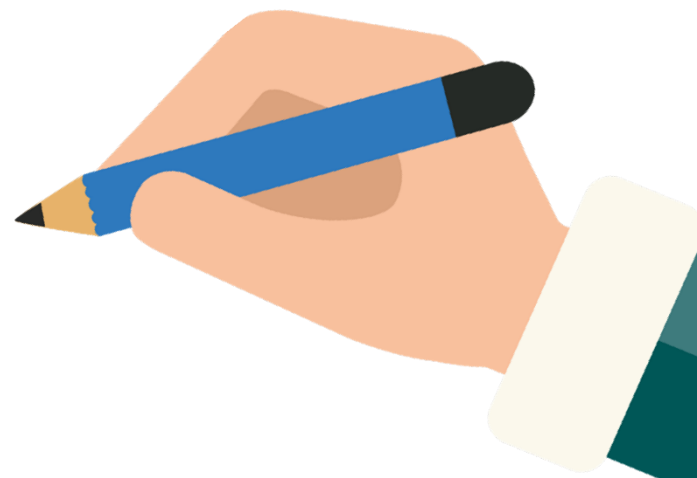
The word on the wall "Rache" means revenge in German.

A telegram is sent to Sherlock from Scotland Yard to help with the investigation.

John Watson is a detective.



10. Draw a picture of your favourite character from the play:





11. Wordsearch.

Words can be found in any direction (including diagonals) and can overlap each other. Use the word bank below.

M M Y S T E R Y W O
Y M U R D E R V W E
D E T E C T I V E U
A N L E K U M L K L
P R O P U B V N W C
O M N I N G N I R U
L C D P B P F S Y O
I A O F B O D Y L Q
C P N S C A R L E T
E Q A U B L O O D X

Word Bank

1. pipe
5. body
9. blood

2. clue
6. mystery
10. london

3. ring
7. detective
11. police

4. cap
8. murder
12. scarlet



transeduca

www.transeduca.com

info@transeduca.com

911 138 140 / 934 740 002